

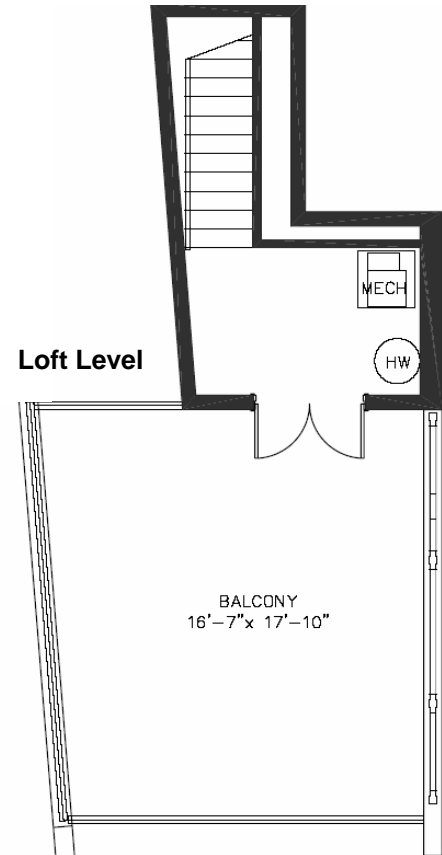
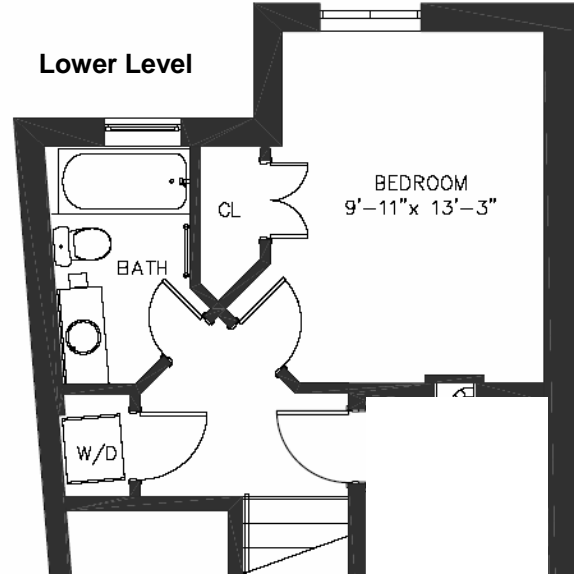
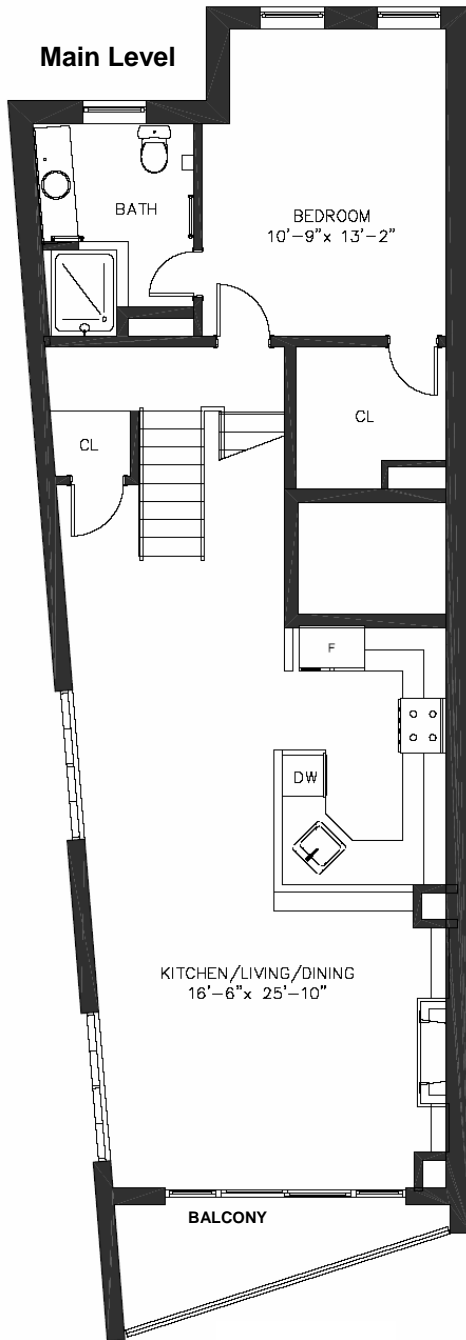


cityscape
ON BELMONT

TWO BEDROOM / TWO BATH / LOFT

1330 Belmont St., NW
Washington, DC 20009
PH. 202.232.4441
CityScapeOnBelmont.com

1336-301



McWILLIAMS | BALLARD



Elevations and floor plans are artist's renderings and accuracy cannot be guaranteed. All room dimensions are approximations only. Dimensions shown for asymmetrical rooms are meant only to suggest usable space. For specific dimensions, please see site sales representative. Plan dimensions and features are subject to change without notice or obligation, as a result of actual site conditions, which may dictate variations in style of windows, doors, and ceilings.